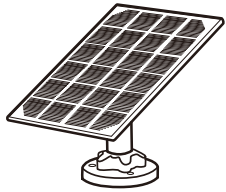


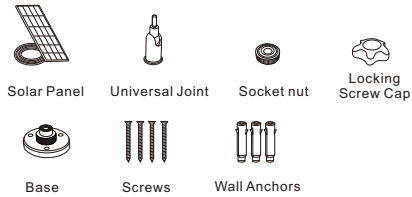
Quick Start Guide



Solar Charger

IN THE BOX

Solar Panel	×1
Universal Joint	×1
Circular Socket Nut	×1
Locking Screw Cap	×1
Base	×1
Screws	×4
Wall Anchors	×3
Quick Start Guide	×1

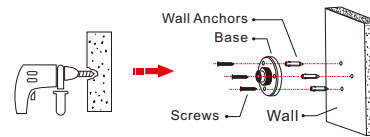


INSTALLATION

Place Solar Panel in an area with consistent sunlight throughout the year. It only needs a few hours of direct sunlight each day to keep your camera powered.

The amount of energy that the solar panel produces is affected by weather conditions, seasonal changes, geographic location, etc.

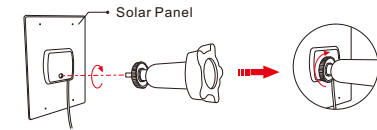
- Fix the base to your mounting location using the included screws. If the installation surface is soft or unstable, first use a $\phi 6.0$ drill bit to drill a hole in the wall, then insert the anchor nail into the hole, and fix the base with screws.



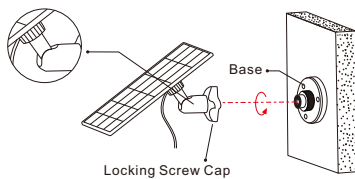
- First, install the locking screw cap into the universal joint and then screw the circular socket nut into the universal joint.



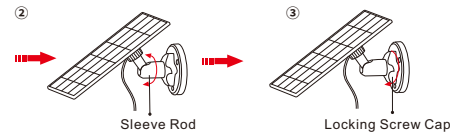
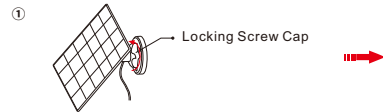
- Screw the universal joint into the back of the solar panel. Tighten it firmly with the attached nut.



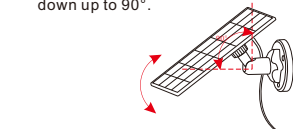
- Screw the locking screw cap into the base. Make sure that the universal joint is angled upward.



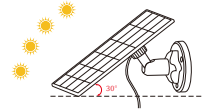
- When adjusting the solar panel left or right, loosen the locking screw cap, turn the sleeve rod, and tighten the locking screw cap when the panel is in position.



- Solar panel's angle can be adjusted up and down up to 90° .



Tip: After the installation is complete, please check that all locking mechanisms are tightly secured.

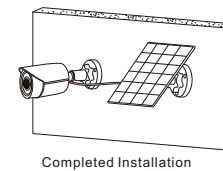


HOW TO POSITION YOUR SOLAR PANEL

- Find the area that gets the most direct sunlight throughout the day.
- Angle the solar panel upward 30° .
- Point it south if in the northern hemisphere and north if in the southern hemisphere.

IMPORTANT

- Wipe the face of the solar panel with a soft, damp cloth regularly to clear any dust or debris.
- Be sure to update the firmware version of the camera to the latest version.



BASIC PARAMETERS

Cable length: 3m
 Operating voltage: 5V DC
 Operating temperature: -20.5°C to 48.5°C (-5°F to 120°F)

FCC WARNING

Any changes or modifications not expressly approved by the party responsible for compliance could void the user's authority to operate the equipment.

This device complies with part 15 of the FCC Rules. Operation is subject to the following two conditions:

- This device may not cause harmful interference, and
- this device must accept any interference received, including interference that may cause undesired operation.

ISED RSS WARNING

This device complies with ISED licence-exempt RSS standard(s). Operation is subject to the following two conditions:

- This device may not cause interference, and
- this device must accept any interference, including interference that may cause undesired operation of the device.